

# MURRAY

# MURRAY CORPORATION Clamping Solutions

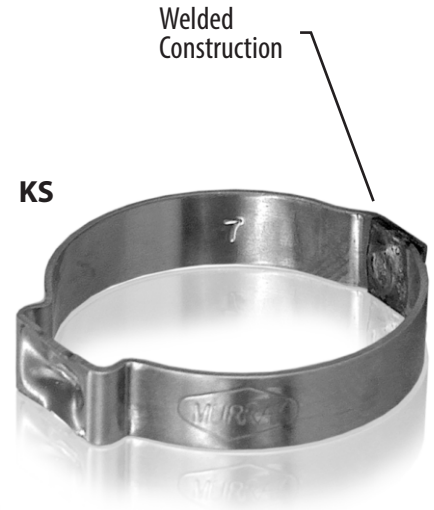
## Keystone Pinch Clamp (Welded) - SAE Type "J" (KS)

Murray KEYSTONE clamping products offer superior strength from 100% stainless steel.

### Common Clamping Applications:

**Irrigation • Water Supply • Fuel & Vapor lines • Beverage Supply Lines  
Car Wash Supply Lines • Dust Shields & Air Filters • Bundles of Cable**

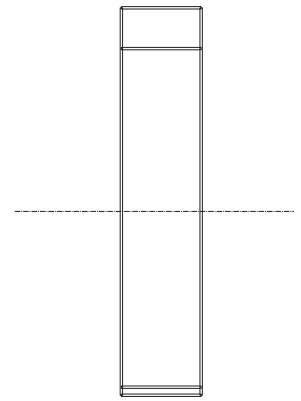
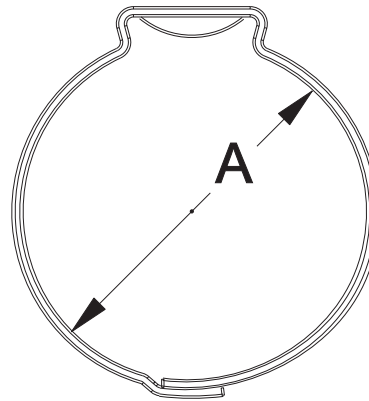
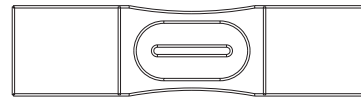
Keystone Pinch Clamps are welded and are quick and easy to install, and provide a uniform, tamper proof seal. They are widely used on both soft hose and rigid plastic pipe. You will find these clamps anywhere you connect poly pipe. Ear clamps are excellent for use in a multitude of irrigation and water supply systems, on fuel and vapor lines, to attach dust shields and air filters, for beverage supply lines, for car wash supply lines, and for securing bundles of cable. When crimping with a hand tool, Murray's true Keystone geometry, located in the ear area, dramatically reduces miscrimps. Keystone Pinch clamps are 100% Stainless Steel.



KS

Part Number	"A" Diameter Range			
	Metric		Decimals	
	Open	Closed	Open	Closed
KS 3119	11.9	10.0	.470	.395
KS 3133	13.3	11.4	.525	.450
KS 3150	15.0	12.5	.590	.490
KS 3157	15.7	13.2	.620	.520
KS 3161	16.1	13.6	.635	.535
KS 3165	16.5	14.0	.650	.550
KS 3173	17.3	14.7	.680	.580
KS 3185	18.5	16.0	.730	.630
KS 3198*	19.8	16.6	.780	.655
KS 3210*	21.0	17.9	.830	.705
KS 3222	22.2	19.1	.875	.750
KS 3236	23.6	20.5	.930	.805
KS 3256*	25.6	22.5	1.010	.885
KS 3271*	27.1	24.0	1.070	.945
KS 3301	30.1	27.0	1.185	1.060
KS 3216*	31.6	28.5	1.245	1.120
KS 3324	32.4	29.3	1.275	1.155
KS 3331*	33.1	30.0	1.300	1.180
KS 3346*	34.6	31.5	1.360	1.240
KS 3396	39.6	36.5	1.560	1.440
KS 3410*	41.0	37.9	1.615	1.490
KS 3425*	42.5	39.4	1.675	1.550
KS 3485*	48.5	45.5	1.910	1.787

Welded



\*Popular irrigation sizes are available for immediate shipment packaged in poly bags. Please inquire on availability of other packaging configurations and lead time for other sizes. Other sizes, shapes and materials are available upon request, subject to minimum order quantities



MURRAY

260 Schilling Circle  
Hunt Valley, MD, 21031, USA

Ph: 410-771-0380 • Fax: 410-771-5576

www.murraycorp.com • email: sales@murraycorp.com